

Entameoba histolytica

*

القبول
21/02/2007

الاستلام
12/04/2006

ABSTRACT

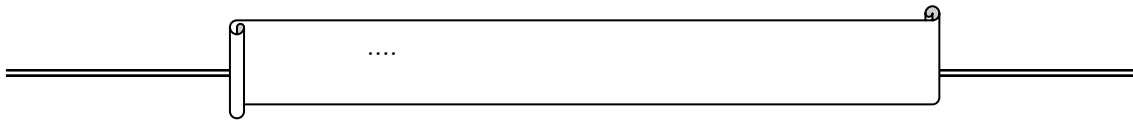
The study has been conducted to reveal the presence of amboebiasis in Ninawa governorate for two successive years, 2002 and 2003 respectively. It was found , after depending on the mean numbers of the infected persons ,that the high prevalence was in June in both years as the average of the infected persons (49..800) in 2002, (44.700) in 2003, while the lowest average of infection was in January(11.500) in 2002 and in May(5.80) in 2003 .And after depending on the percentages of infections the highest infection rate was in December (46.2963) in 2002 and in April(62.6016) in 2003., while lowest infection rate was in April(4.6607) and December(3.8777) in 2002 and in March(2.2073) in 2003. It is concluded that the percentages of infection give more accurate status of infection.

As concern relation between the infection and the age groups, the infection rate was high in the (5-9) years age groups as it reacted (37.583) in 2002 and (34.625) in 2003, while the lowest infection rate was in (45) years and more (8.833) in 2002 and (6.917) in 2003.

Furthermore, no significant differences were noticed between the infection and the kind of sex . Also it appeared that the infection rate was high among those sent for general stool examination in July 2002 and October and December in 2003 and the rate was low in January 2002 and April 2003.

2003-2002

*

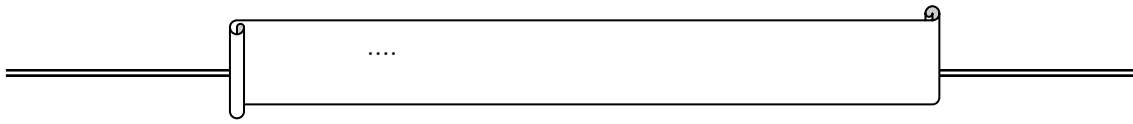


2003 (44.700) 2002 (49.800)
2002 (11.50)
2002 (5.800) 2003
2002
2003 (3.8777) (4.6607)
(2.2073)
2002 (37.583) (9-5)
(6.917) 2002 (8.833) (45)
(46.2963) 2002 2003
(62.6016) 2003
2002
2003
2003 2002

Entamoeba histolytica

(Haque et al., 2003)
(Bennett and Plum, 1996) homosexual
:





(2)

9 - 5
 , 2003 34.6 2002 37.6
 . 2003 6.917 2002 8.8

(2)

2002 (1)

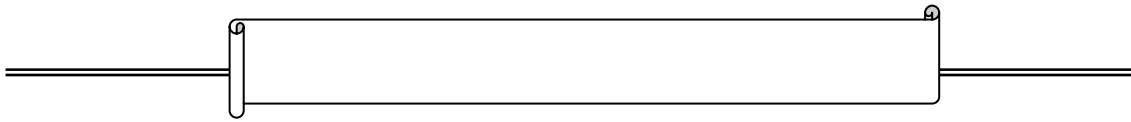
2002 ,
 . 0.6 , 8.9
 (2) 2003
 . 0.3 , 10.0 9.9

(3)

2002 (2003 2002)
 2003 3.6607 46.2963

. 2.2073 62.6016





(1)

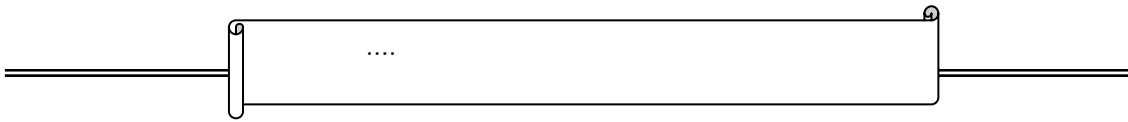
2003 2002

2003-2002	2003	2002	
14.700	17.900	11.50	
14.150	12.300	16.00	
11.600	10.700	12.500	
12.800	6.500	19.100	
18.700	5.800	31.600	
47.250	44.700	49.800	
27.850	26.500	29.200	
27.500	27.800	27.200	
26.200	25.400	27.000	
24.800	26.700	22.900	
37.550	44.00	31.100	
26.950	27.700	26.200	
	23.000	25.342	

*

. p≤0.05





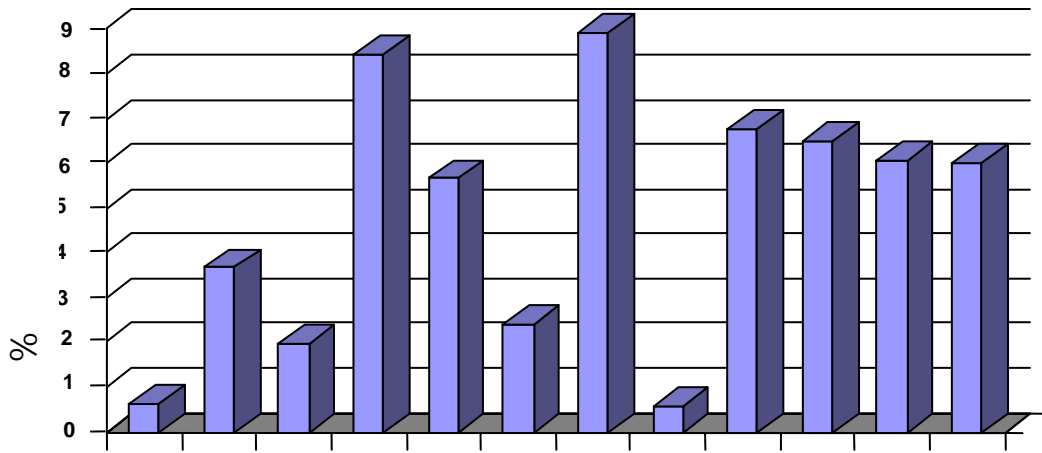
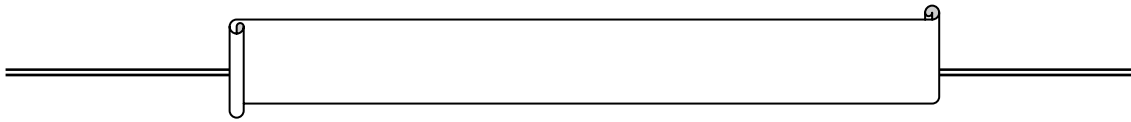
(2)

2003 2002

2003-2002	2003	2002	/
29.290	27.292	31.291	4 -
36.104	34.625	37.583	9 - 5
26.479	26.542	26.417	14 - 10
21.104	19.625	22.583	44 - 15
7.875	6.917	8.833	45
25.033	23.517	26.550	
23.308	22.482	24.133	

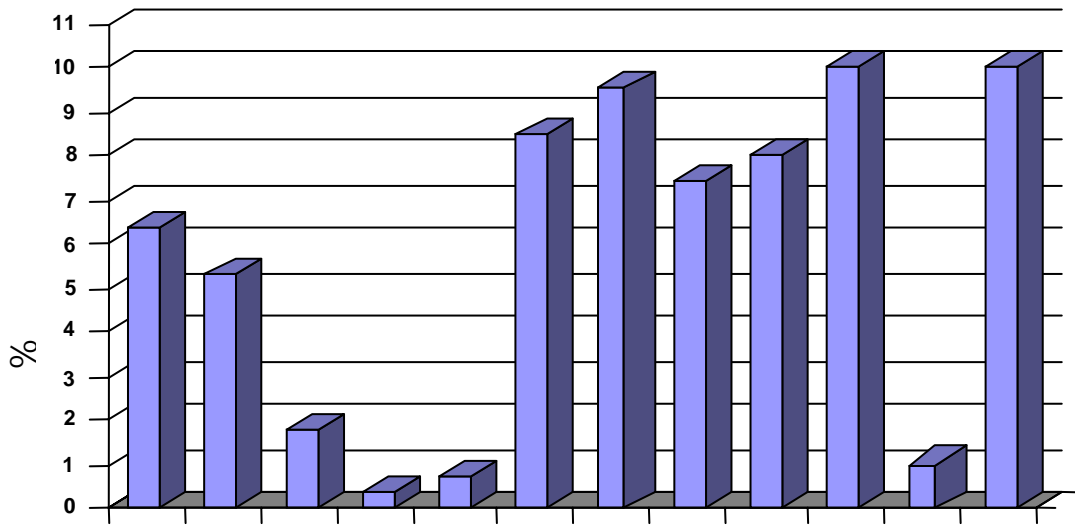
*

.p ≤ 0.05



2002

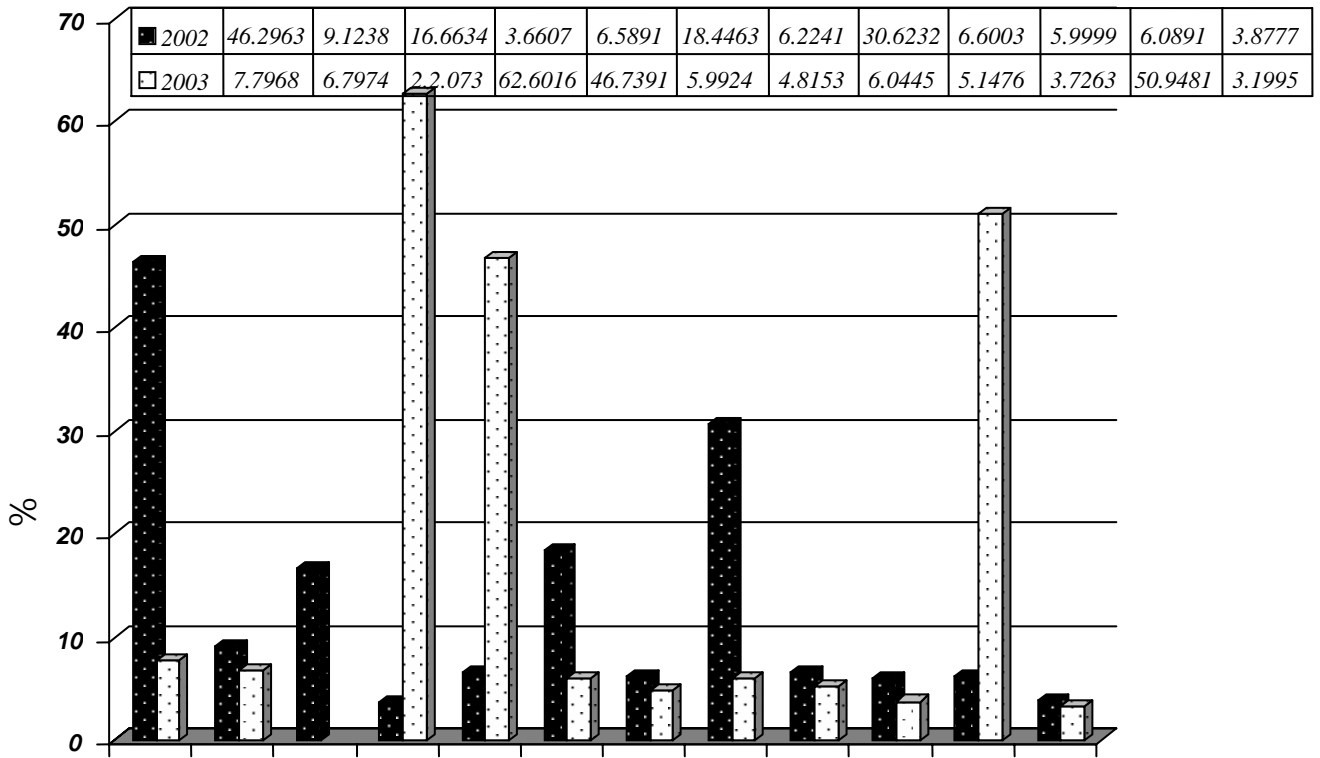
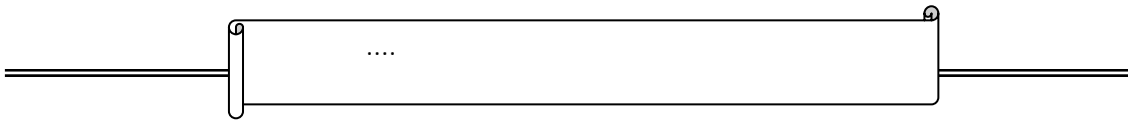
(1)



2003

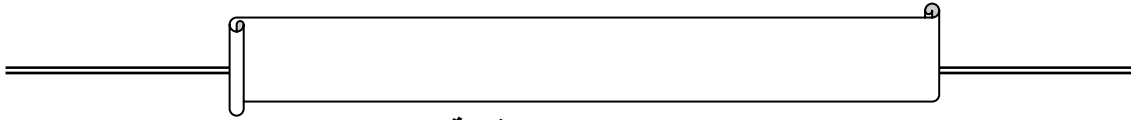
(2)





(3)

. 2003 2002



المناقشة

(Belding , 1965)

. (WHO , 1980)

	2003	(44.700)	(49.800)	2002
2002				
2003			(11.50)	
			. (5.800)	

10

10

45

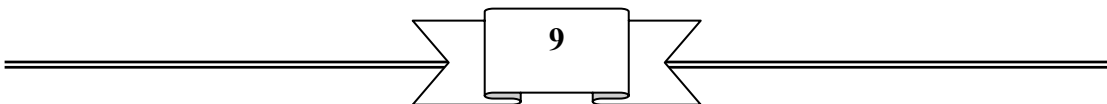
10

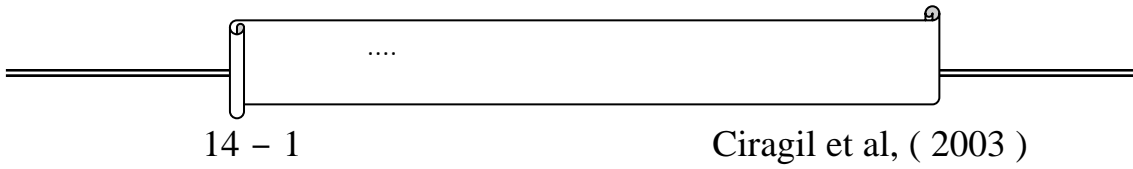
10

(1997)

(1998)

(2000)





Khan et al, (1989)

Nimri ,(1994)

948

body mass index

(Zeyrek et al., 2003)

Demirci et al, (2003)

(2001)

(2000)

(1998)

2002

. 2003

, 2002

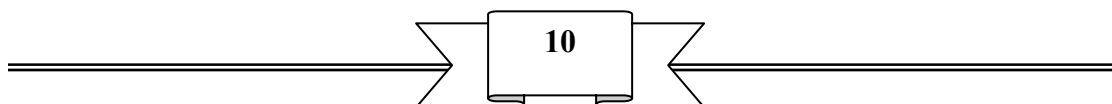
(1997)

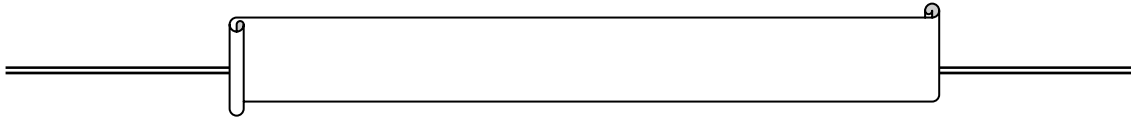
(1998)

2003

. 2003

2002





Abdel – Hafez et al,(1986)

2003 2002

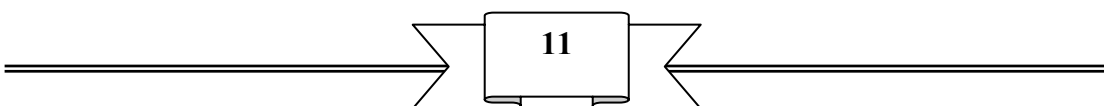
2002

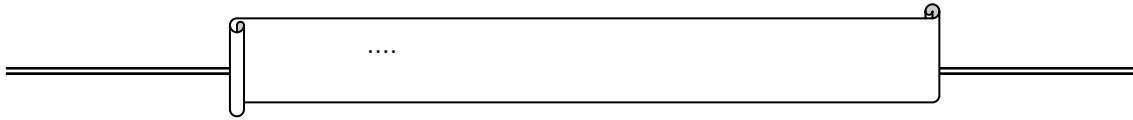
2003

2003

(Patz , 2000)

. Niazi et al, (1976)





(2000)

. 487-1:

. (1998)

. 117 - 1:

. (1984)

. 469 - 1:

. (2000)

. 180 - 1:

. (2001)

. 60 - 1:

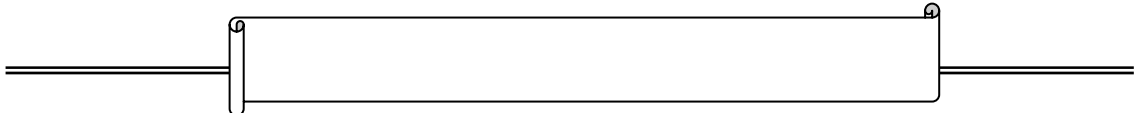
. (1980)

. 570 - 1:

. (1997)

. 37 - 33:(1) 8

Abdel – Hafez , M. M. A. ; El-Kady , N. ; Bolbol , A.S. and Baknina , M. H. (1986) . Prevalence of intestinal parasitic infections in Riyadh district , Saudi Arabia . Annals of Tropical Medicine and Parasitology , 80 (6) : 631 – 634 .

- 
- Belding , D.L. (1965) .** Textbook of parasitology , 3rd ed. , Appleton Century – Crafts . New York :1 – 1374 .
- Bennett , J. and Plum , F. (1996) .** Cecil textbook of medicine, 20th ed. W.B. Saunders Company : 1913 – 1915 .
- Brown , H.W. and Neva , F.A. (1983) .** Basic clinical parasitology . Appleton – Century – Crofts , New York :1 – 339 .
- Ciragil , P. ; Aral , M. ; Ekerbicer , C. and Gül , M. (2003) .** The distribution of intestinal parasites in patients applying to the microbiology laboratory of the sutcu Imam University Medical Faculty. *Turkiye Parazitoloji Dergisi*, 27(2): 136 – 138 .
- Demirci , M. ; Kaya , S. ; Demirdal , T. and Aridogan , C. (2003) .** Importance of toilet training and hygiene in the intestinal parasitosis . *Turkiye Parazitoloji Dergisi*, 27 (3) : 211 – 213 .
- Haque , R. ; Huston , C. ; Hughes , M. ; Houpt , E. and Petri , W.(2003) .** Amoebiasis : Review article. *The New England Journal of Medicine* , 348 : 1565 –1573 .
- Khan , M.V. ; Amir , S.E. ; Eid , O.M. and Aggrewal , S. (1989) .** Prevalence of intestinal parasites among patients in the Abha region . *Annals of Saudi Medicine* , 9 (5) : 230 – 471 .
- Niazi , A. D. ; Al-Essa , T. B. and Khamis , F. (1976) .** Studies on the prevalence of *Entamoeba histolytica* in Iraq . *Bulletin of Endemic Diseases* , 17 (1 - 4) : 127 – 141 .
- Nimri , L. F. (1994) .** Prevalence of giardiasis among primary school children . *Child Care Health Development* , 20 (4) 131 – 137.
- Patz , J. A. (2000) .** Global climate change and infectious diseases. *Acta Parasitologica* , 45 (3) : 211 (abstract) .
- WHO. Scientific Working Group (1980) .** Parasite – related diarrhoeas . *Bulletin of the World Health Organization* , 58 : 819 – 830 .
- Zeyrek , F. Y. ; Zeyrek , C. D. ; zbilge , H. and Mizrakli , A. U. (2003) .** Factors affecting the distribution of intestinal parasite in primary school children in Sanliurfa and their effect on growth . *Turkiye Parazitoloji Dergisi*, 27 (3) : 203 – 206 .